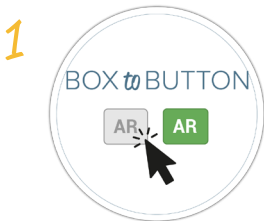
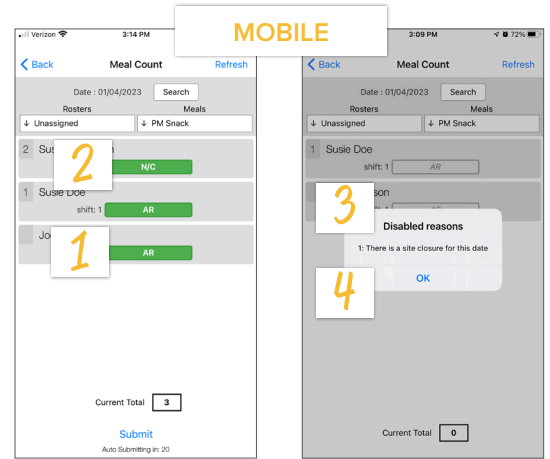
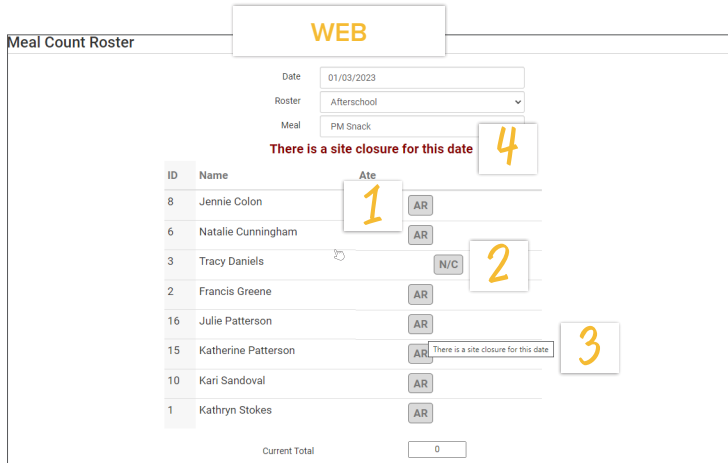


### ATTENDANCE AND MEAL COUNTS ON SEPARATE SCREENS: AT-RISK AFTERSCHOOL

#### MEAL COUNT SCREENS

View our Help Center articles to learn more about using the improved [meal count screen](#).



1 Click the button to check a participant in for a meal

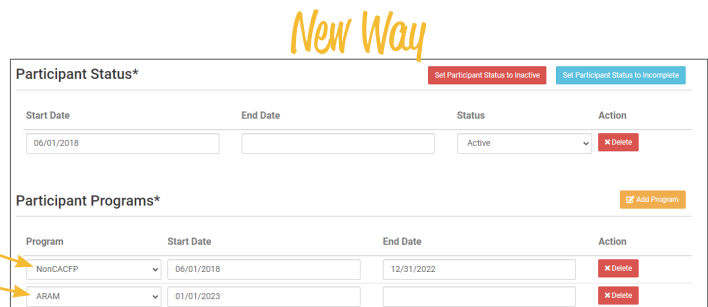
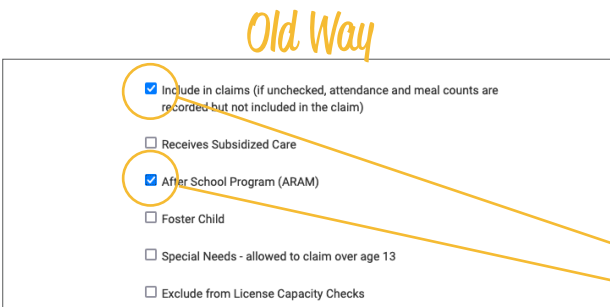
2 Designation for participants not included in claims (N/C box)

3 Feedback about why a meal count is disabled through hover text

4 Screen message about site closures

#### PARTICIPANT SCREEN

View our Help Center article to learn more about using the improved [participant screen](#).



The “Include in Claims” and “After School Program (ARAM)” boxes are now set as date ranges under Participant Programs. Unless a participant has declined the CACFP, there is nothing you need to do with the ARAM Participant Program. If a participant has declined the Food Program (for example, they are providing their own food) or it is a staff person that needs to be counted but not claimed, please [reference our Help Center article on Non-CACFP Program Type](#).